

Directions for use :

Place this word document (includes processing Macros) in the directory containing your setup files. Open it ,then press CTRL + space, A, 1 or U as described below.

CTRL + space - To display these usage directions

CTRL + A - To UPDATE all files in the directory

Original files are unchanged, updated files are saved

with a CHG prefix on the original file name.

M138 updated to 80, M139 updated to 00.

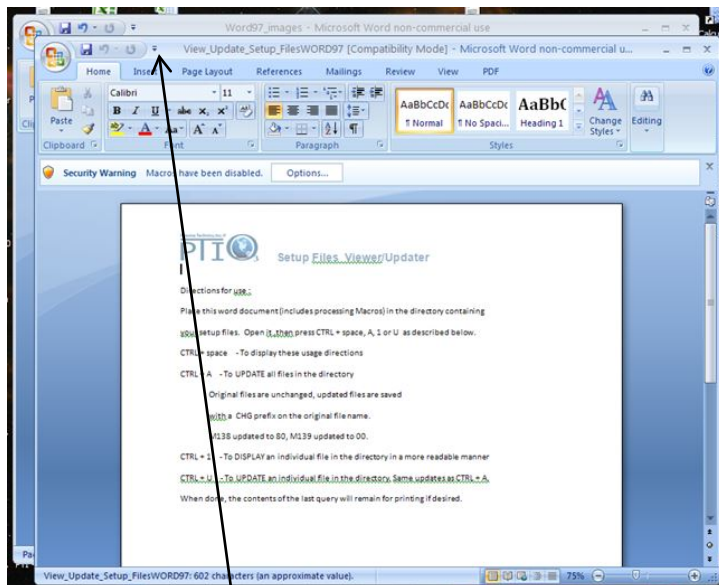
CTRL + 1 - To DISPLAY an individual file in the directory in a more readable manner


CTRL + U - To UPDATE an individual file in the directory. Same updates as CTRL + A. except the original file is updated. No copy with a CHG prefix is created.

When done, the contents of the last query will remain for printing if desired.

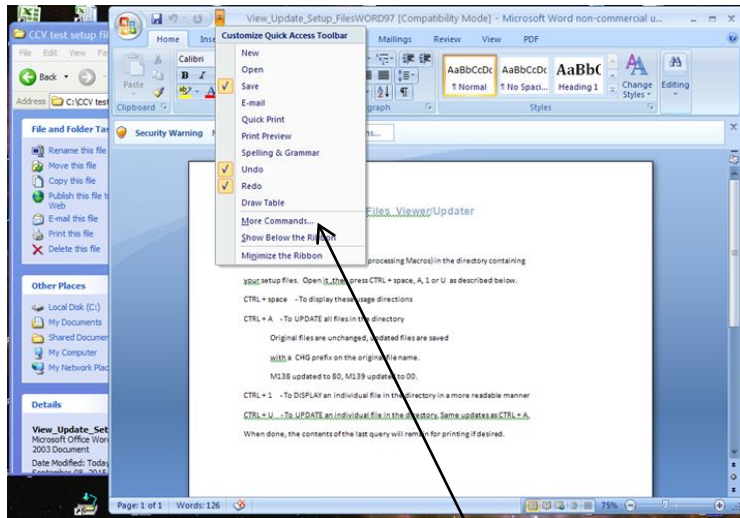
Additional details :

On pc's with older versions of WORD it may be necessary to use the word file provided ending in "WORD97". In some cases the CTRL keyboard keys mentioned in the documentation (e.g. CTRL + space, CTRL + 1...) may have to be assigned again to the specific macros embedded in the document. To do this follow the directions below.

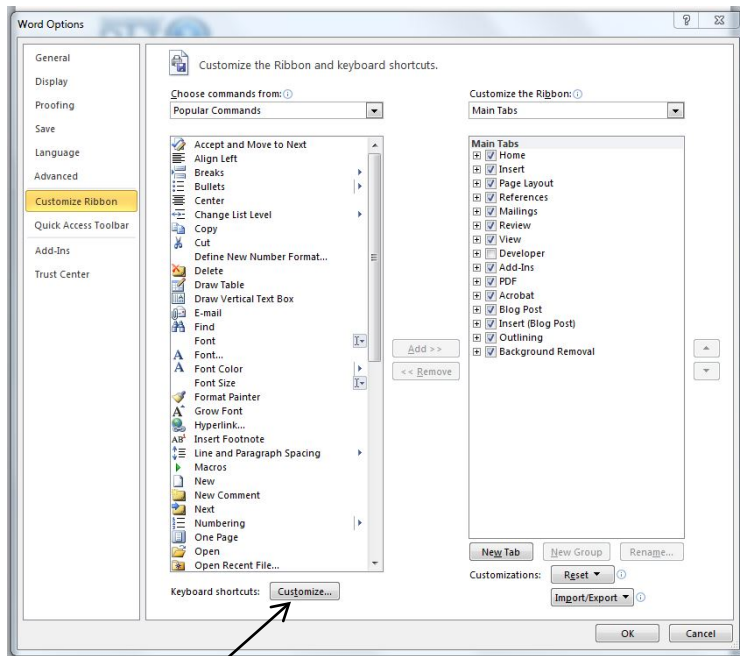


Click on the icon  to get Word options.

View / Update DAT210 Setup Files

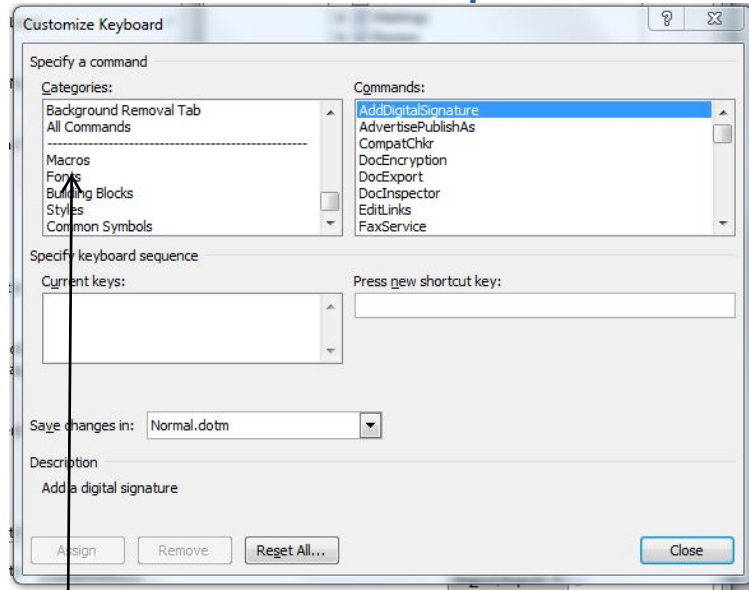


From the drop down, select “More Commands”

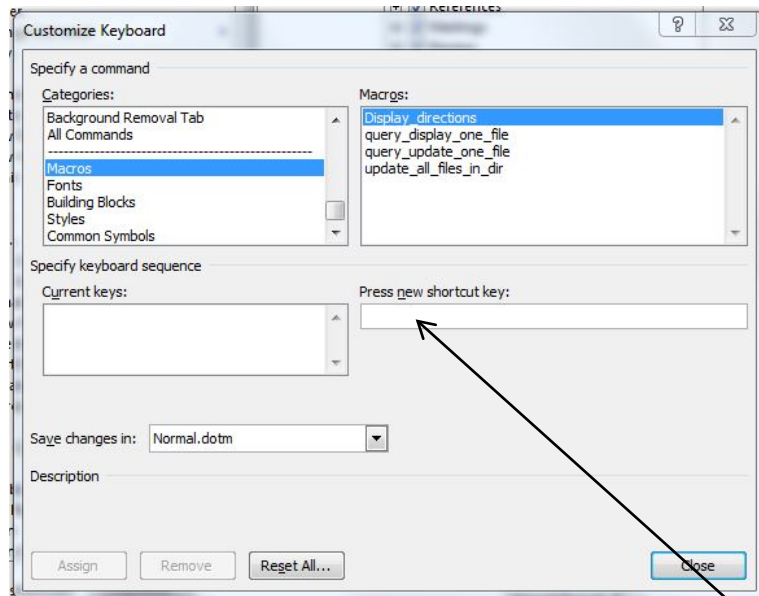


Click on the “customize” button

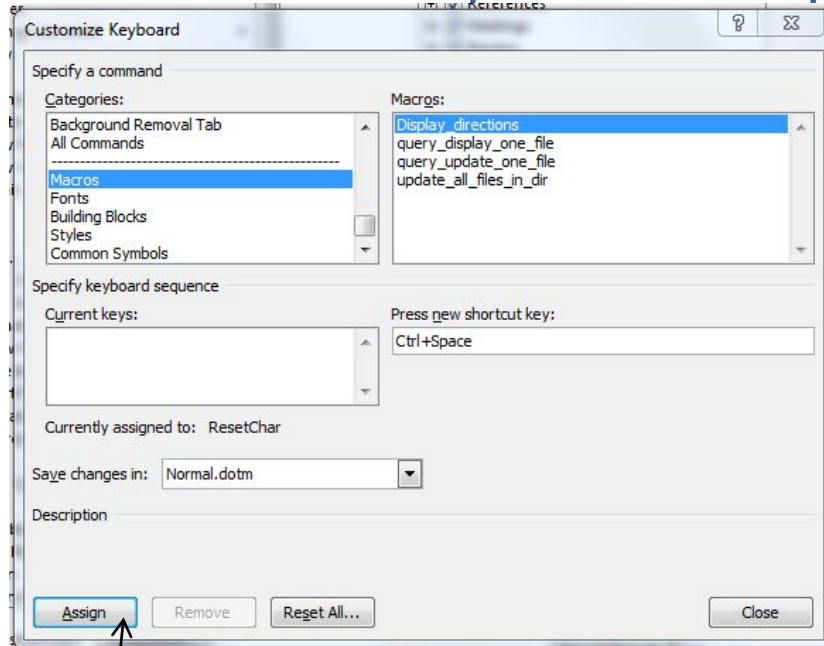
View / Update DAT210 Setup Files



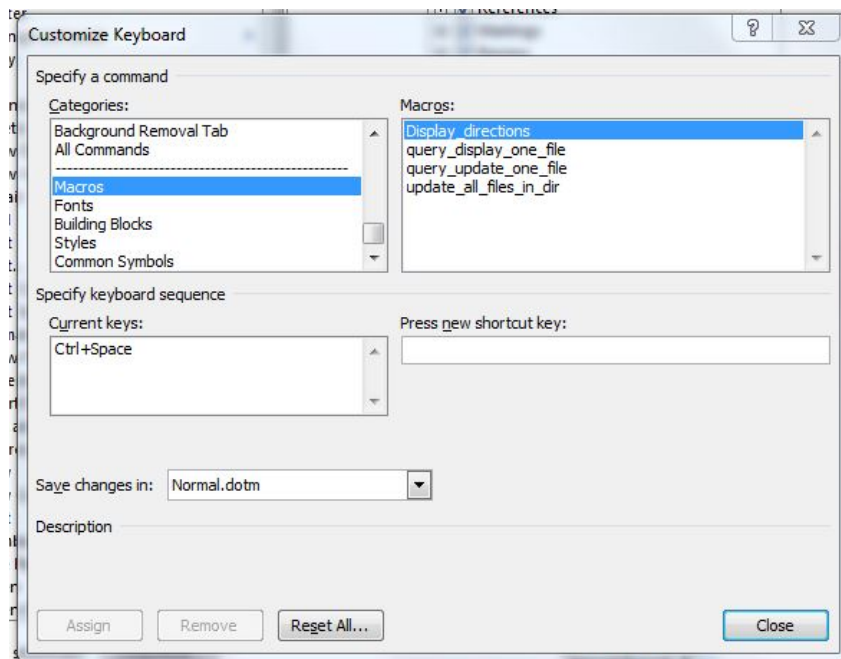
When the above window appears, scroll the “categories” group to the bottom where “macros” appears as one of the choices. Highlight “macros” and all the macros in the document will list in the “commands” panel.



As you highlight each macro it becomes possible to assign a key to it.



In this case the CTRL + space key has been hit. You then click on the “Assign” button. The CTRL + space then moves to the current keys window. This macro will now run when the user hits the CTRL + space key.



The four macros in the file were originally assigned the following keys...

display_directions	CTRL + space
query_display_one_file	CTRL + 1
query_update_one_file	CTRL + U
update_all_files_in_dir	CTRL + A